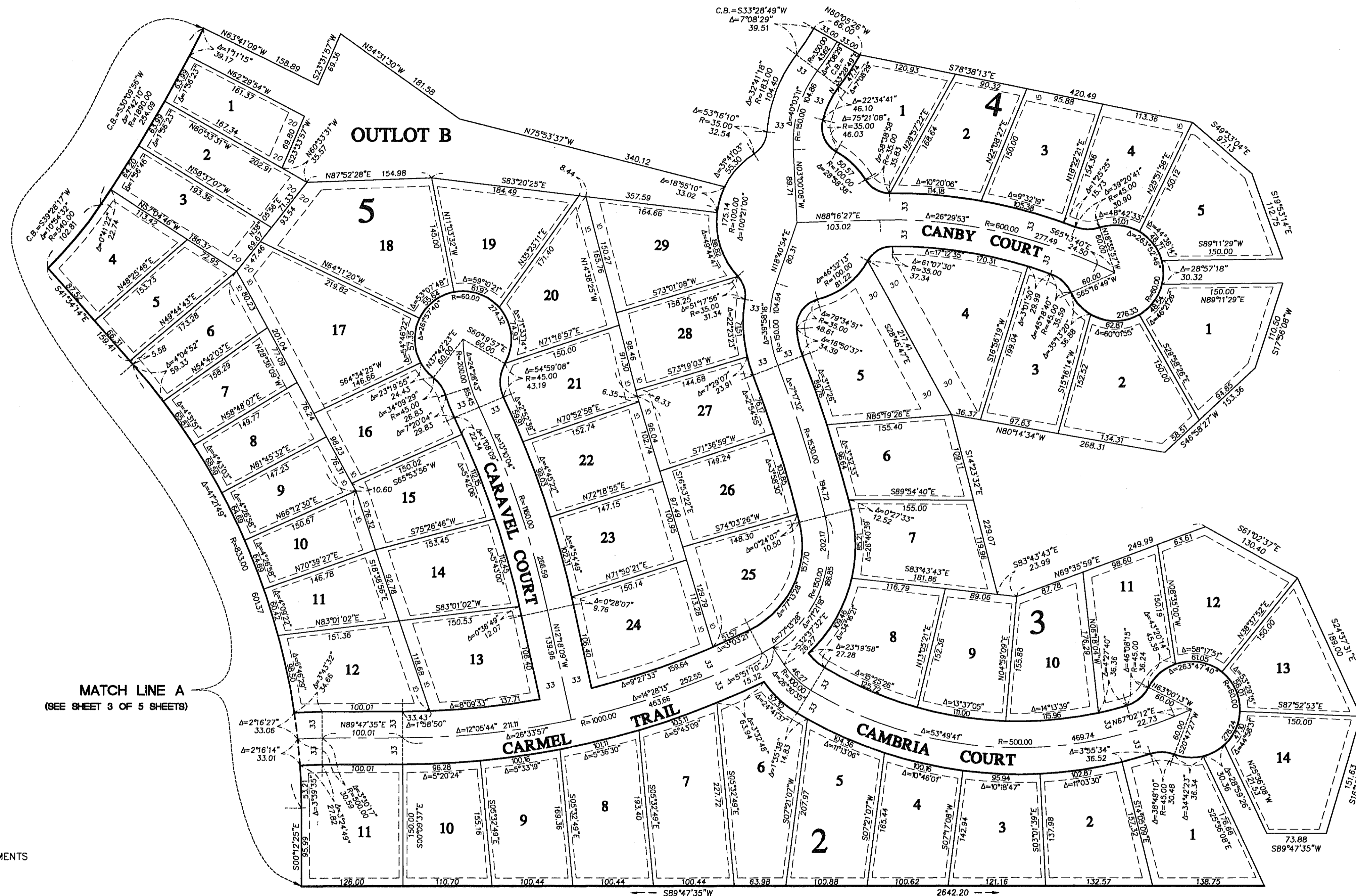
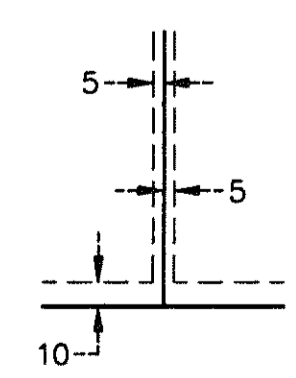


# PROVIDENCE



DRAINAGE AND UTILITY EASEMENTS ARE SHOWN AS THUS:

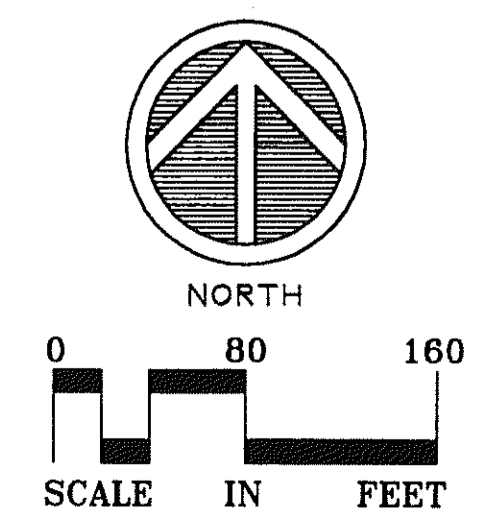


BEING 5 FEET IN WIDTH AND ADJOINING LOT LINES, AND BEING 10 FEET IN WIDTH AND ADJOINING RIGHT OF WAY LINES AND REAR LOT LINES UNLESS OTHERWISE INDICATED

THE NORTH LINE OF THE NW 1/4 OF SECTION 20, TOWNSHIP 114, RANGE 19, DAKOTA COUNTY, MINNESOTA, HAS AN ASSUMED BEARING OF N89°44'05\"/>

NO MONUMENT SYMBOL SHOWN ON THE PLAT INDICATES 1/2 INCH BY 14 INCH IRON PIPE, MARKED BY LICENSE NUMBER 44109, TO BE SET ACCORDING TO MINNESOTA STATUTES, AND WHICH SHALL BE IN PLACE ON OR BEFORE ONE YEAR FROM THE RECORDING OF THIS PLAT

C.B. DENOTES CHORD BEARING



DRAWING NUMBER

DRAWING NUMBER

DRAWING NUMBER

DRAWING NUMBER

485

For Sheet 1-12



NEW HOPE, MINNESOTA  
 SAFCO PRODUCTS • NEW HOPE, MINNESOTA  
 REPRODUCED BY PLAT NUMBER 6582  
 SAFCO PRODUCTS • NEW HOPE, MINNESOTA  
 REPRODUCED BY PLAT NUMBER 6582  
 SAFCO PRODUCTS • NEW HOPE, MINNESOTA  
 REPRODUCED BY PLAT NUMBER 6582